

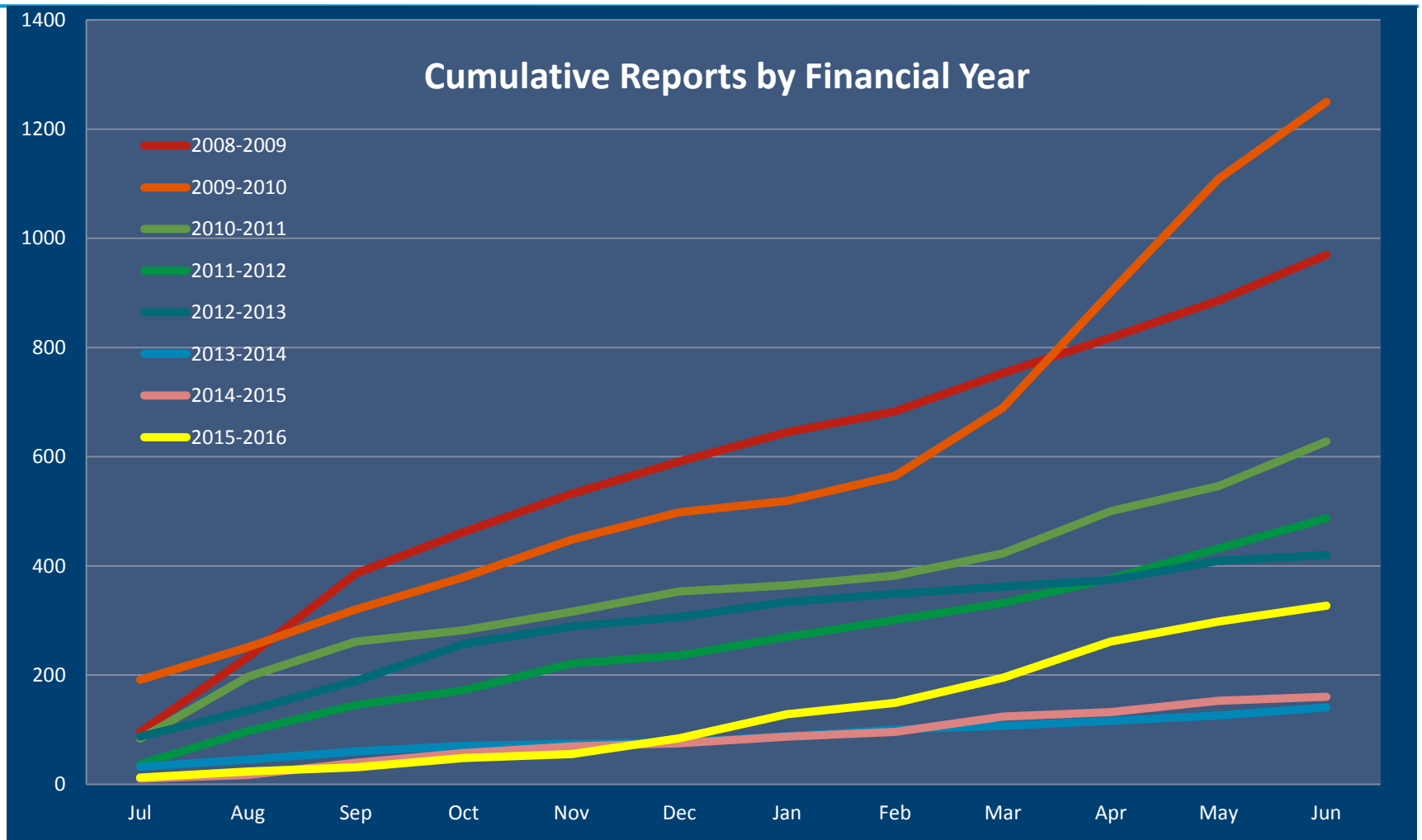
# Brooklyn Community Representative Group Information Update July 2016



Environment  
Protection  
Authority Victoria



# Odour Reports 2015/16

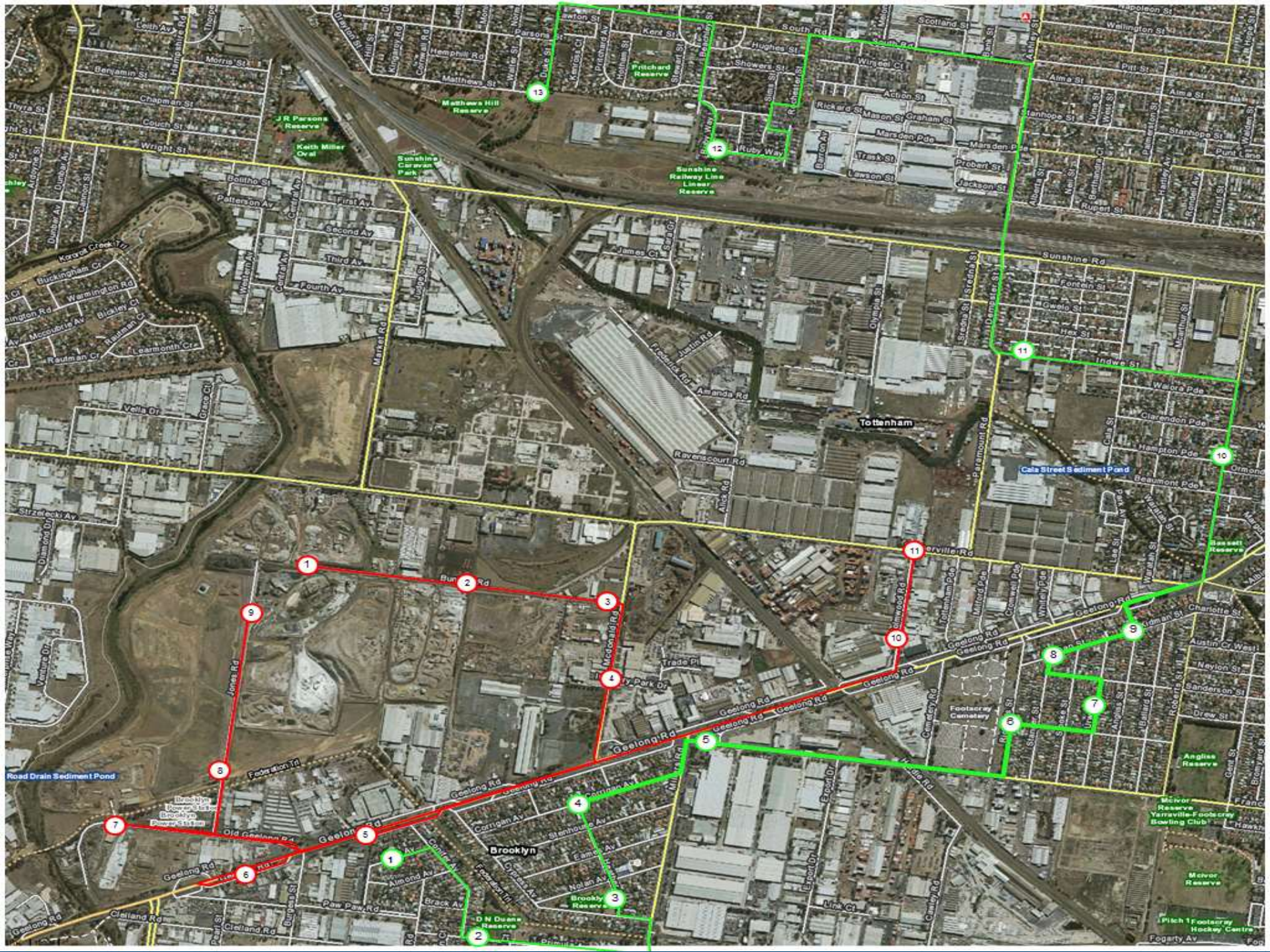


# Brooklyn Odour Survey 2016

---

- Conducted from May 2016 – June 2016
- Residential monitoring in:
  - Brooklyn
  - Yarraville
  - West Footscray
  - Sunshine
- Industrial monitoring around major industry in Brooklyn
- At each point on the odour monitoring route an officer would stop and smell (check for odour)
- 454 Individual Odour Checks across 20 surveys.
  - 285 Residential survey point/checks
  - 165 Industrial survey points/checks





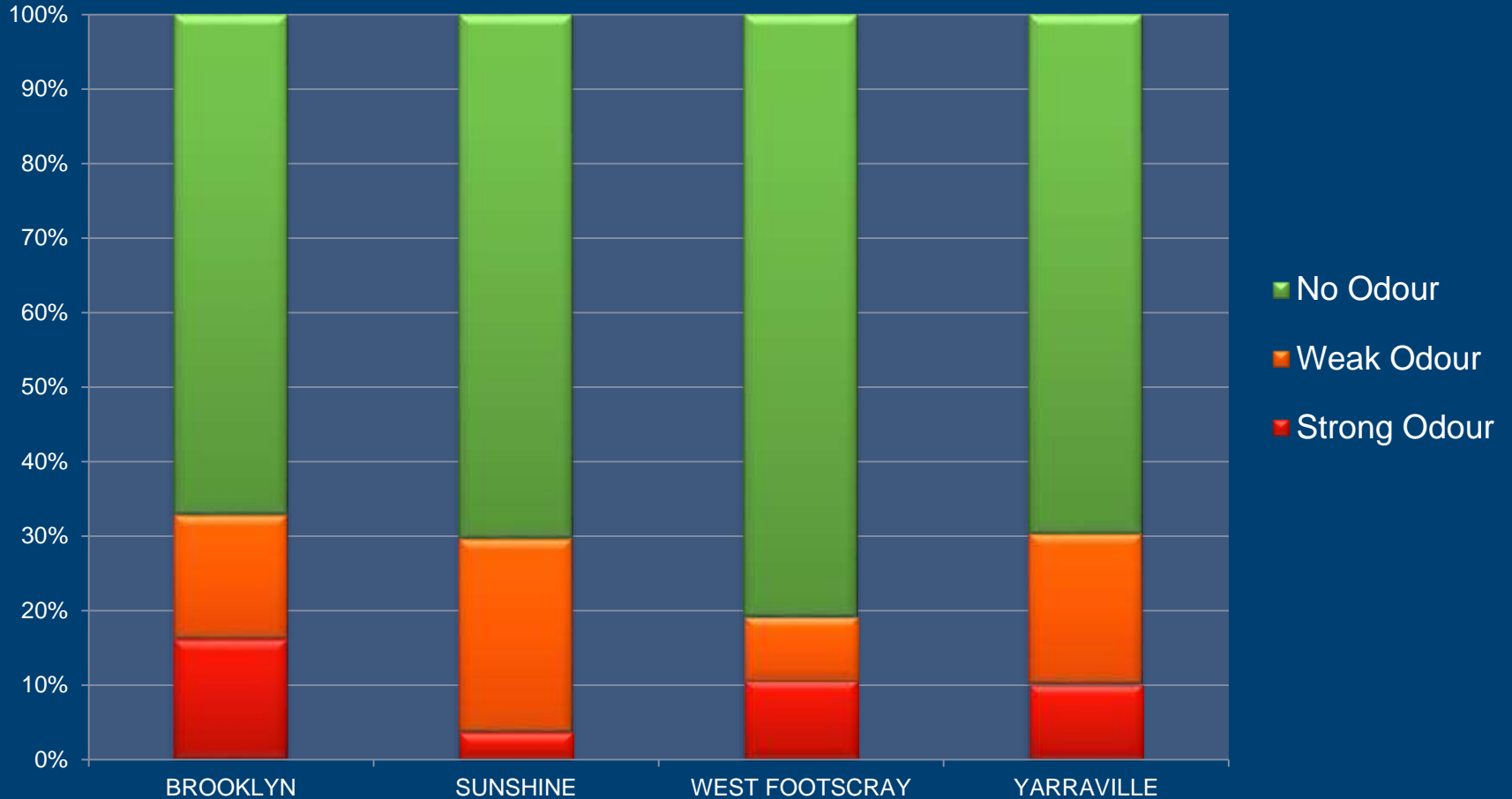


# How The Data Was Analysed

---

- Using weather data, and officer observations, the trajectory of odour plumes were determined and linked to local industries
- Data compared with Brooklyn Surveys in 2008, 2009, 2010 and 2012

# Odour By Suburb



# Odour Sources



# Reports vs Observations

---

- Increase in odour reported by the community,
- It's real and has been confirmed by surveillance
- Brooklyn community reports are a good indicator of odour impacts
- The recent spike in odours was found to be caused by;
  - Burning Waste,
  - Manure (from Stockyards/Abattoir), &
  - Rendering Plants.

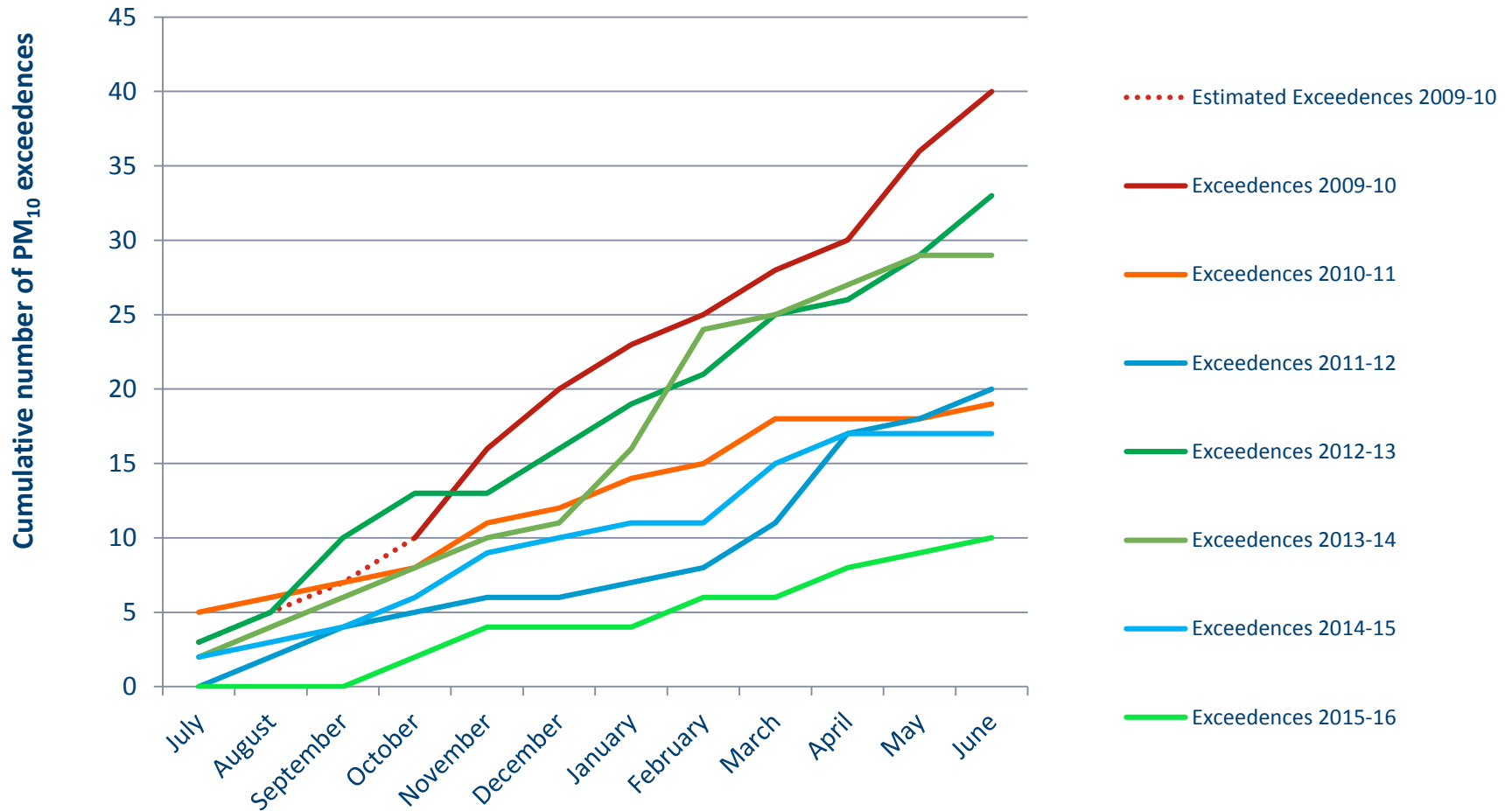


# Actions

---

- Pollution Abatement Notices issued on 2 companies
- Penalty Infringement Notice issued on 1 company
- 2 Investigations are ongoing
- More notices are planned
- Reformed licenses for all landfills being rolled out

# Dust Update



# Air Quality Update

---

- Sealing of roads has led to significant improvements in air quality.
- 2015/16 lowest number of poor air quality days since monitoring began (10) smashing previous record in 2014/15 (17).
- 2015/16 was also the equal driest year since monitoring began.
- Review of Dust strategy to commence in the next 2 months, looking at deployment of portable dust sensors at key locations to get a better understanding of remaining sources.
- Over the last 5 years EPA has issued 58 Pollution Abatement Notice's (PAN's) AND 10 sanctions for dust related issues and 2 sanctions and a prosecution for odour related issues.

# Questions

---

## Contact us

EPA Victoria welcomes your comments, queries and feedback.



1300 EPA VIC (1300 372 842)



[contact@epa.vic.gov.au](mailto:contact@epa.vic.gov.au)